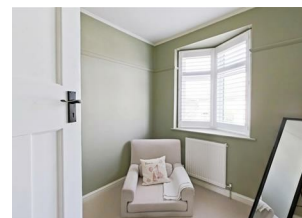
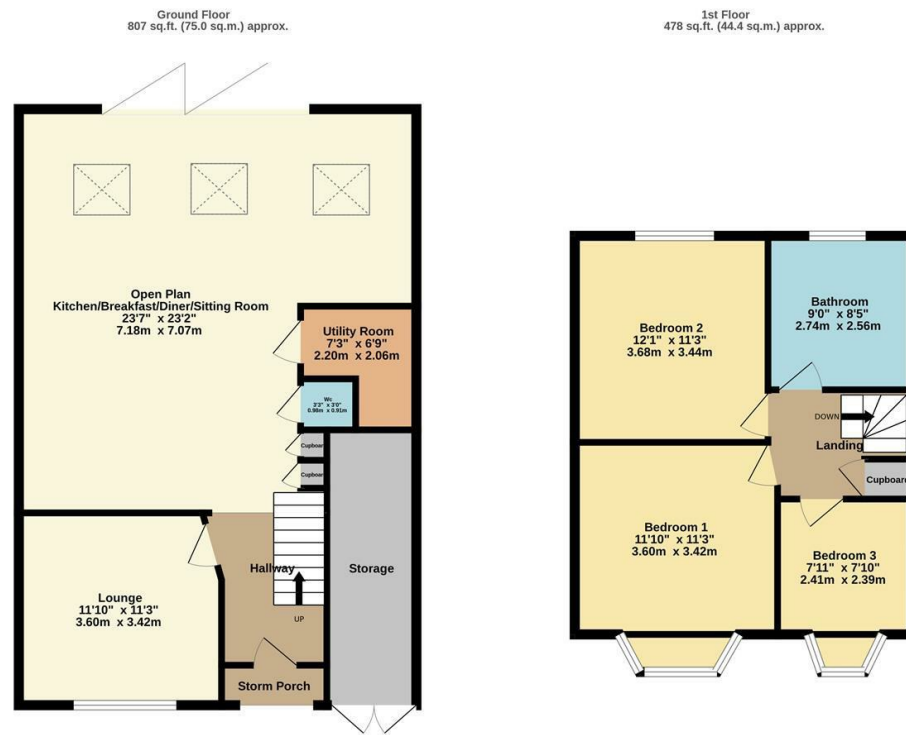
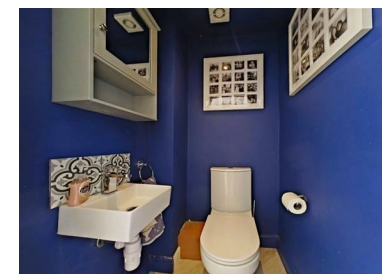


Energy Efficiency Rating		
	Current	Potential
Very energy efficient - lower running costs		
(92 plus) A		87
(81-91) B		
(69-80) C		66
(55-68) D		
(39-54) E		
(21-38) F		
(1-20) G		
Not energy efficient - higher running costs		
England & Wales	EU Directive	
	2002/91/EC	



WHITFIELD ROAD
BEXLEYHEATH DA7 5LS
Guide price £600,000



22 Albert Road, Belvedere, Kent, DA17 5LJ

01322 947 967

sales@mlmestateagents.co.uk
www.mlstateagents.co.uk

IMPORTANT: we would like to inform prospective purchasers that these sales particulars have been prepared as a general guide only. A detailed survey has not been carried out, nor the services, appliances and fittings tested. Room sizes should not be relied upon for furnishing purposes and are approximate. If floor plans are included, they are for guidance only and illustration purposes only and may not be to scale. If there are any important matters likely to affect your decision to buy, please contact us before viewing the property.





OPEN HOUSE SATURDAY 30th MAY - 11.00am-12.00pm (BY APPOINTMENT)

Beautifully extended and recently refurbished to an exceptional standard, this impressive three-bedroom semi-detached home is perfectly positioned within the ever-popular The Pantiles, offering stylish modern living in one of Bexleyheath's most desirable locations.

From the moment you step inside, the quality of finish is immediately apparent. The heart of the home is the spectacular open-plan kitchen/dining space to the rear, designed with both family life and entertaining in mind. Flooded with natural light from elegant skylights peppered across the ceiling, this superb space also features a cosy snug area, making it the ultimate social hub for relaxing, dining and gathering with friends and family. A separate utility room and downstairs WC add further practicality.

To the front of the property, a beautifully presented lounge offers the perfect retreat away from the main entertaining space.

Upstairs, the property offers three well-proportioned bedrooms and a stylish family bathroom, all finished to a high standard and ready to move straight into.

Externally, the home benefits from off-street parking for two vehicles to the front and a well-maintained rear garden, ideal for outdoor enjoyment with minimal fuss.

Location is key, and this property certainly delivers. Just minutes from the local shopping parade, within easy reach of Bexleyheath railway station, and surrounded by highly regarded schools, it offers exceptional convenience for commuters and families alike.

Best of all, the property is offered to the market chain free, allowing for a smoother, faster and stress-free move.

A truly outstanding home that effortlessly combines style, space and location — early viewing is highly recommended.

3 BEDROOMS • 2 RECEPTION ROOMS • 2 BATHROOMS

WHITFIELD ROAD

BEXLEYHEATH DA7 5LS

- STUNNING 3 BEDROOM SEMI DETACHED
- LARGE OPEN PLAN EXTENDED KITCHEN/DINER
- DOWNSTAIRS WC AND UTILITY ROOM
- WALKING DISTANCE TO THE SHOPPING PARADE AT THE PANTILES
- CLOSE TO GREAT PRIMARY SCHOOLS
- PARKING FOR 2 VEHICLES
- EPC D
- 1284 SQ FT
- COUNCIL TAX BAND D
- NO FORWARD CHAIN!!

